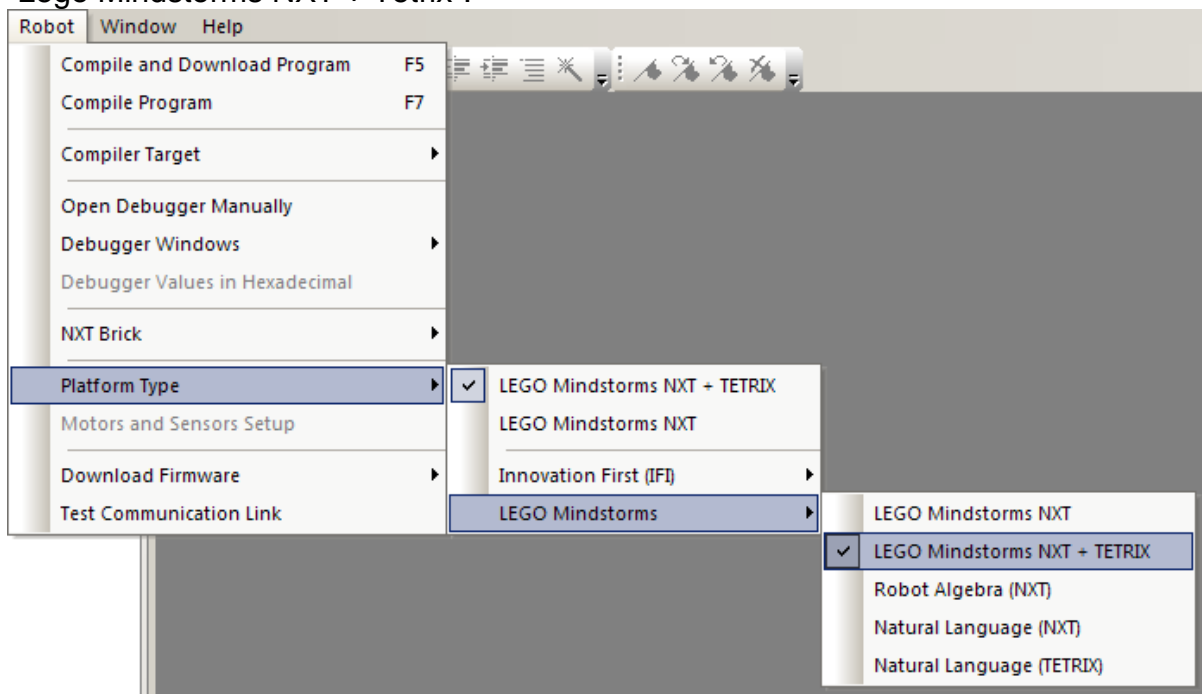


How to connect to Samantha WiFi module using ROBOTC

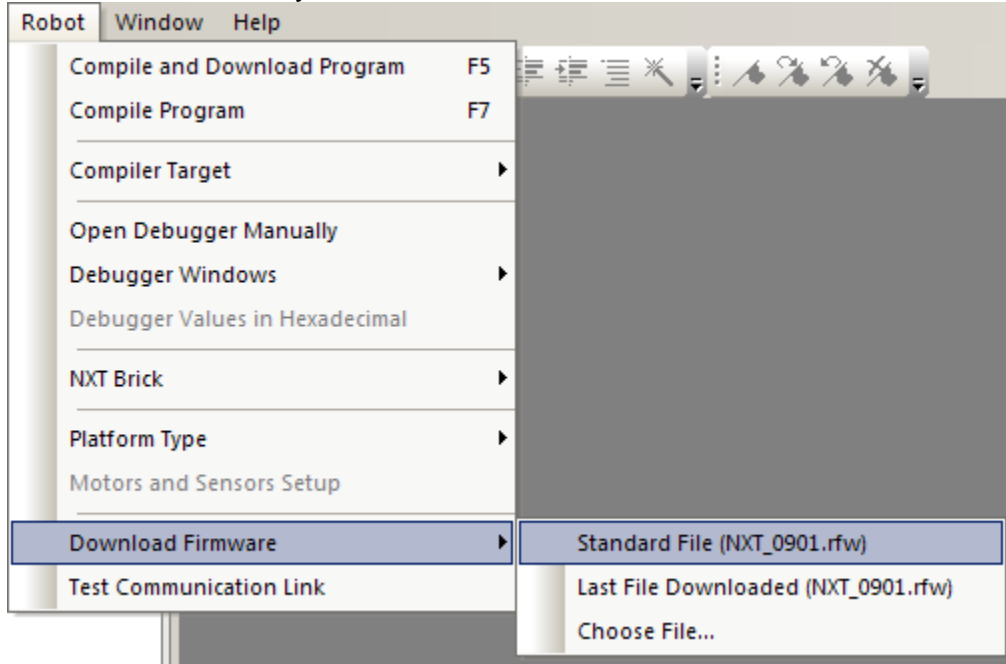
- Step 1.** Download and Install the latest NXT drivers.
32-bit: http://www.robotc.net/files/NXTUSBDriver_32bit.zip
64-bit: http://www.robotc.net/files/NXTUSBDriver_64bit.zip

Also install the latest version of the Samantha firmware (currently 2.02, maybe newer) found in the Firmware folder of your ROBOTC installation or on the FIRST FTC site.

- Step 2.** Connect NXT to computer using the USB cable and set your Platform Type to “Lego Mindstorms NXT + Tetrix” by clicking on the “Robot” menu, then on the “Platform Type” sub-menu, then on the “LEGO Mindstorms” sub-menu, and finally selecting “Lego Mindstorms NXT + Tetrix”:



Step 3. Update firmware by clicking on the “Robot” menu, then on the “Download Firmware” sub-menu, and finally on “Standard File”:

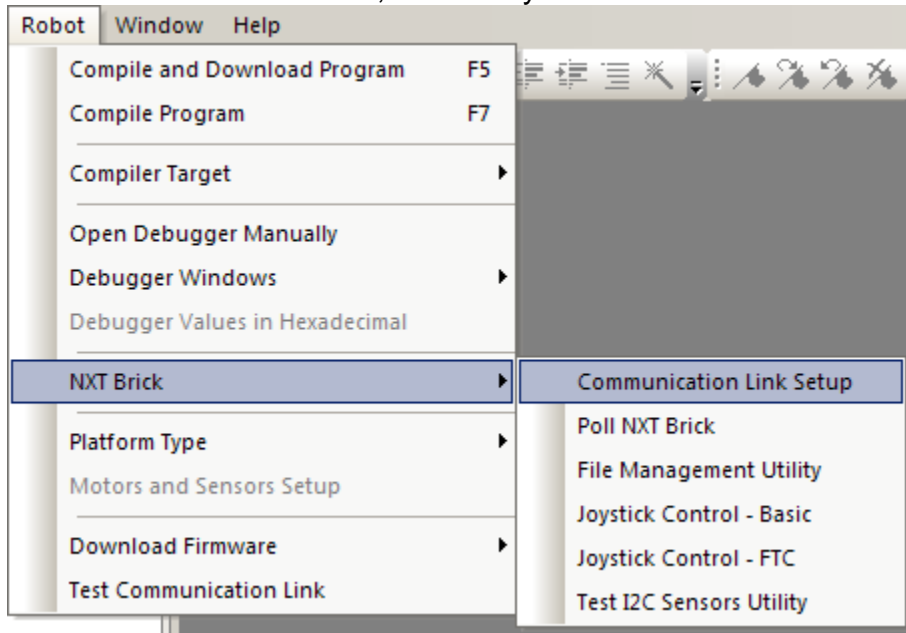


Step 4. Select your NXT and click on “F/W Download” to begin the download process.

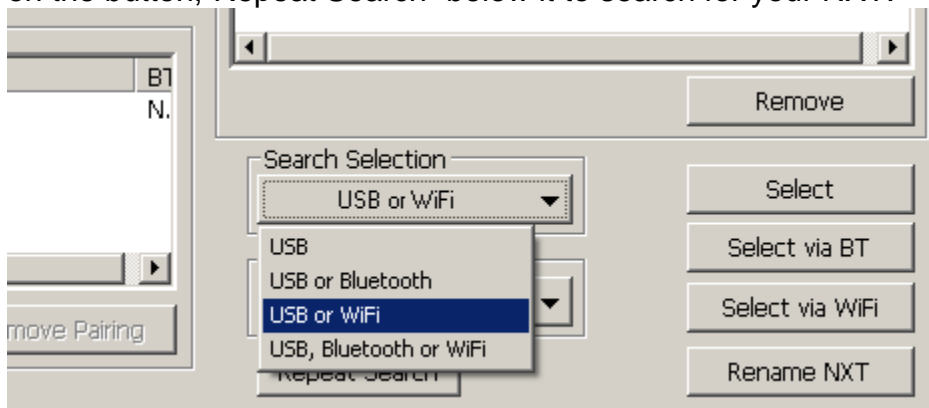
Step 5. Once the firmware has been successfully downloaded, disconnect the USB cable from your computer and connect it to the Samantha module.

** For this tutorial on getting ROBOTC to use Samantha WiFi with the NXT, we assume that you have already configured a network and your Samantha module to work properly. **If you have not yet configured your Samantha module to work on a network, please do so before continuing on to the next step.** **

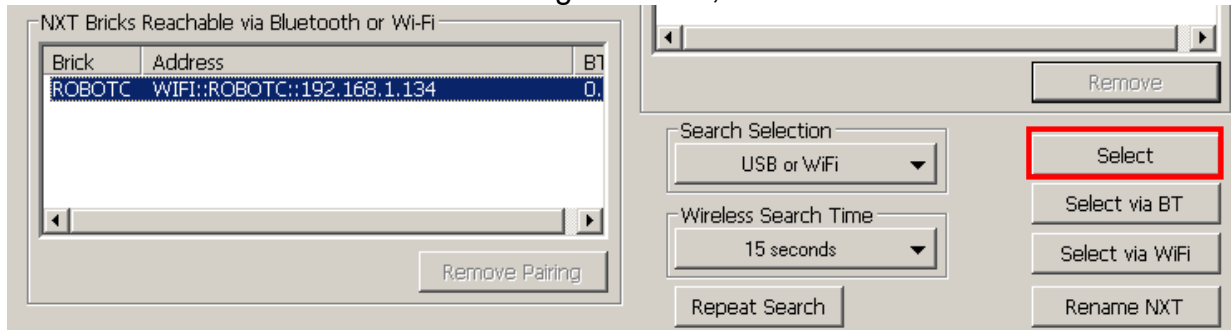
Step 6. Once the firmware has been downloaded successfully, we need to setup ROBOTC to use the Samantha module. To begin this process, click on the “Robot” menu, then on the “NXT Brick” sub-menu, and finally on “Communication Link Setup”:



Step 7. In this NXT Brick Link Selection window, find the dropdown-menu titled, “Search Selection” and choose either “USB or WiFi” or “USB, Bluetooth, or WiFi”. Then click on the button, “Repeat Search” below it to search for your NXT:



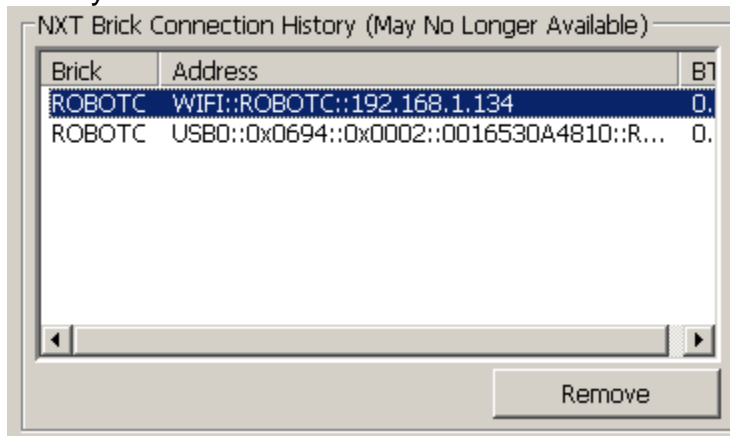
Step 8. If everything thus far was successful, you should see your NXT name and WiFi address in the box titled, “NXT Bricks Reachable via Bluetooth or Wi-Fi”. Select your device and click the button on the far right labeled, “Select”:



** Note that if your brick name appears as, “No Avail”, then the Samantha module isn’t paired with the NXT. Press the small button on the top of the Samantha module for one second to pair your NXT to the Samantha module and try again.*

*If your brick name appears as, “NoComm”, then your NXT may have turned off, or the USB cable isn’t securely attached between the NXT and the Samantha module. **

Step 9. You should now see your device listed in the box labeled, “NXT Brick Connection History”:



Step 10. Click on “Close” and you’re all set! You should now be able to both Download and Compile programs as well as use the ROBOTC debugger via Samantha WiFi!